



Bosworth Close

Milton Keynes, Bucks, MK3 7UB

£159,950



Bosworth Close

Milton Keynes, Bucks, MK3 7UB



Description

FREEHOLD HOME Prime Choice are delighted to offer this one bedroom end of terrace house for sale. New to the market with no upward chain, the property comprises a living room, kitchen/breakfast room, double bedroom and family bathroom. Additional benefits include UPVC double glazing, gas central heating, parking and a large rear garden.

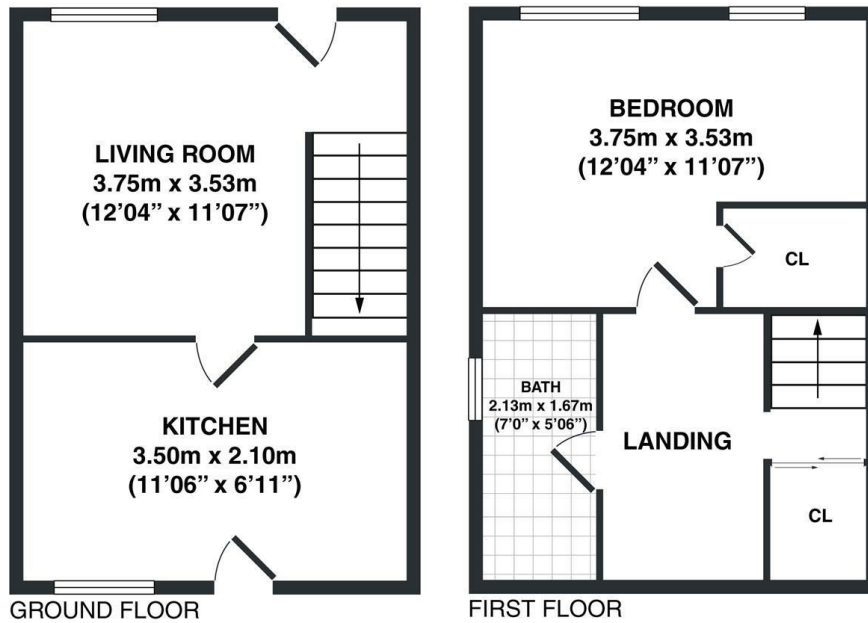
Need more information? For FAQs, information about council tax and local schools, area guides and to join our mailing list, visit our website.

- One Bedroom End Terrace
- Double Glazing
- Fitted Kitchen
- Off Road Parking
- Gas Central Heating
- No Upward Chain
- Freehold
- Large Rear Garden





Floor Plan



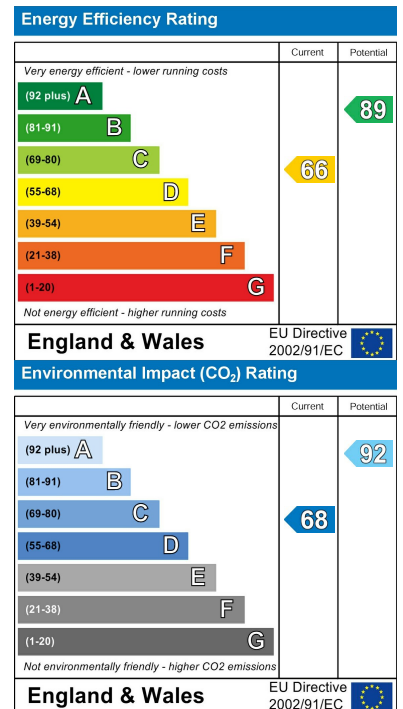
Total area : approx. 37.36 sq. meters (402.1sq. feet)

This floor plan is for illustrative purposes and layout guidance only. It is not drawn to scale. Dimensions should not be used for carpet or flooring sizes and are not intended to form part of any contract.

Area Map



Energy Efficiency Graph



Viewing

Please contact our Rushden Office on 01933 316 131 if you wish to arrange a viewing appointment for this property or require further information.

These particulars, whilst believed to be accurate are set out as a general outline only for guidance and do not constitute any part of an offer or contract. Intending purchasers should not rely on them as statements of representation of fact, but must satisfy themselves by inspection or otherwise as to their accuracy. No person in this firm's employment has the authority to make or give any representation or warranty in respect of the property.